

85Vac~265Vac

BUCK

BUCK-BOOST

650V

120mW@220Vac

45KHz

PWM

EMC

EMC

SOP8

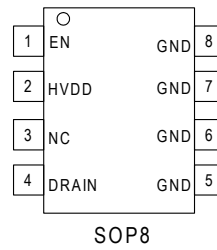
SM7075P

PWM

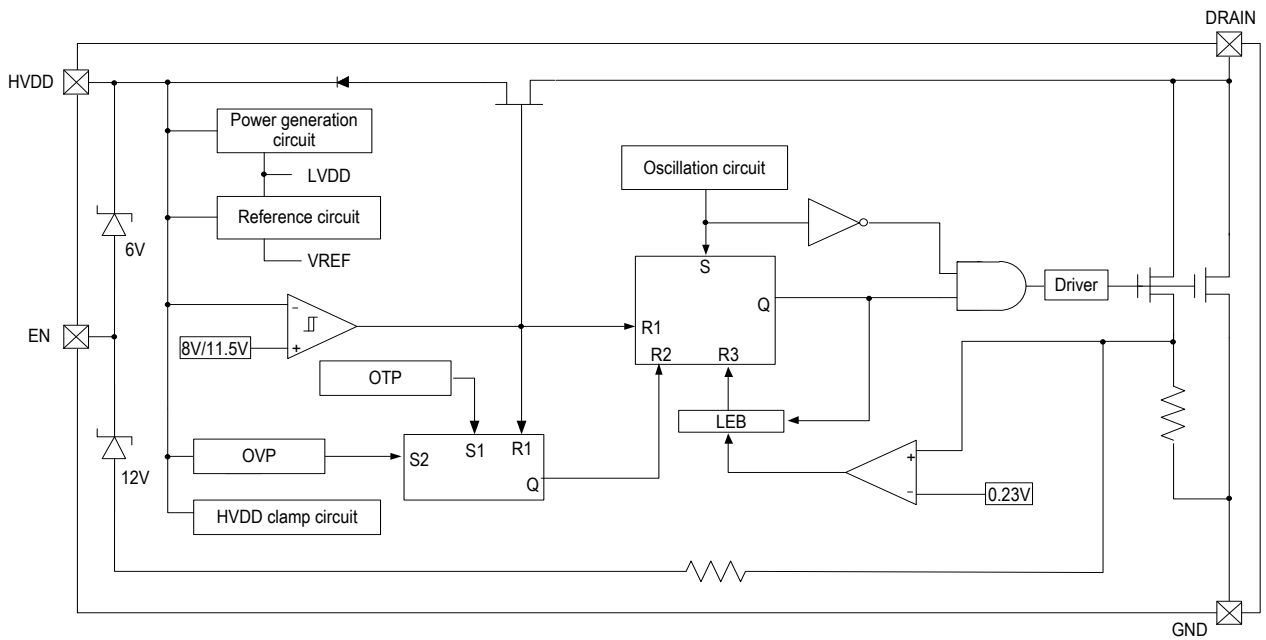
BUCK

BUCK-BOOST

12V/18V



		85Vac~265Vac	180Vac~265Vac
	SOP8	12V	300mA
		18V	250mA

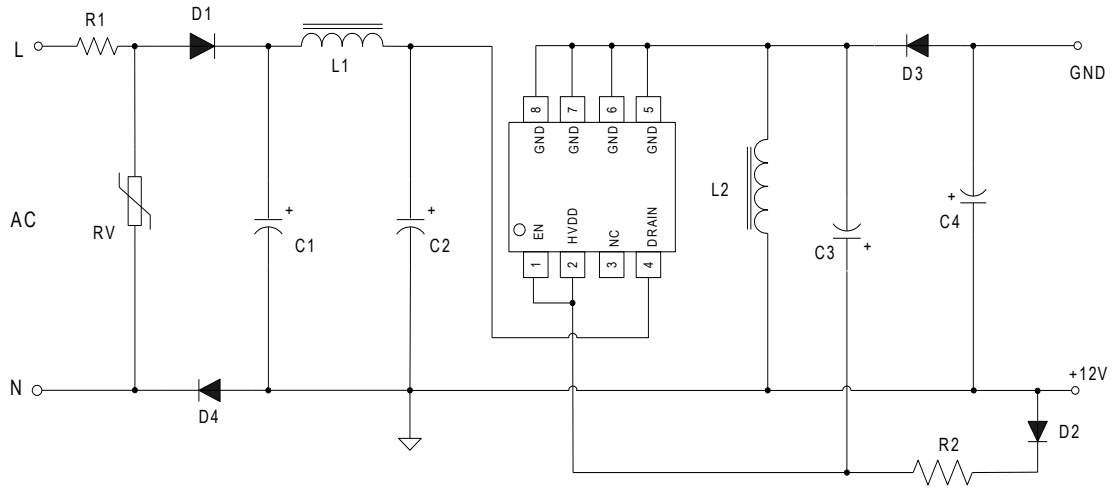


1	EN	EN	HVDD	12V
2	HVDD	EN		18V
3	NC			
4	DRAIN	MOS	DRAIN	
5,6,7,8	GND		MOS	SOURCE

SM7075P	SOP8	100000 /	4000 /	13

业务电话：400-033-6518

注：如需最新资料或技术支持，请与我们联系



BUCK-BOOST

C1 C2 L1

EMI

R1

D1 D4

L2

D2 HVDD

D3

$$V_{OUT} = V_{HVDD} + V_{F_{D2}} - V_{F_{D3}} \approx V_{HVDD}$$

D2

D3

HVDD

C2

MOS

HVDD

C3

C3

11.5V

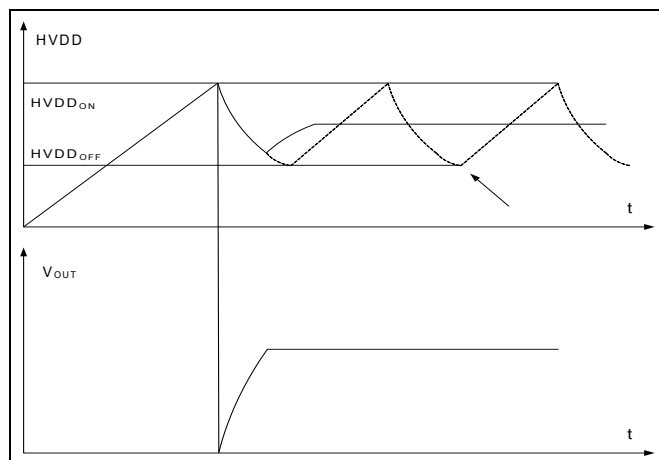
MOS

PWM

C3

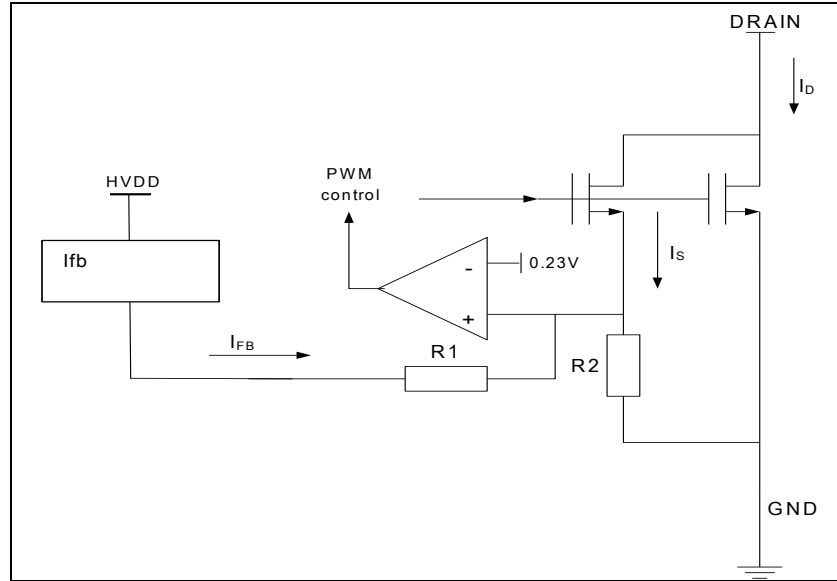
9V

PWM



业务电话：400-033-6518

注：如需最新资料或技术支持，请与我们联系



MOS

I_D

I_S

I_S

I_D

$$I_D = G_{ID} \cdot I_S$$

$$I_S = \frac{0.23V}{R2} - I_{FB}$$

$$I_D = G_{ID} \cdot \left(\frac{0.23V}{R2} - I_{FB} \right)$$

I_{FB}

I_D

I_{FB}

I_D

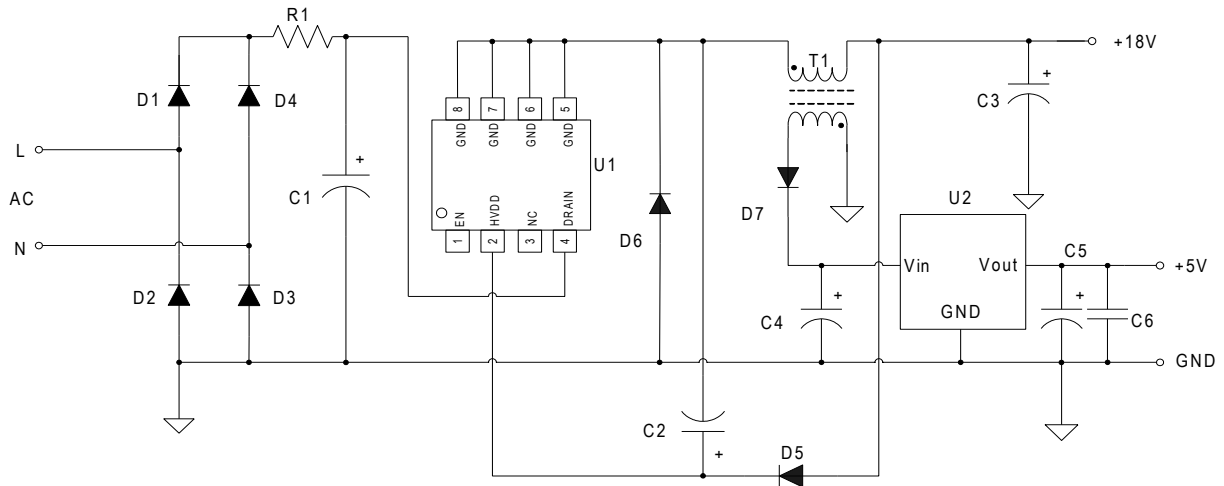
I_{FB}

$(0.23V / R2)$

PWM

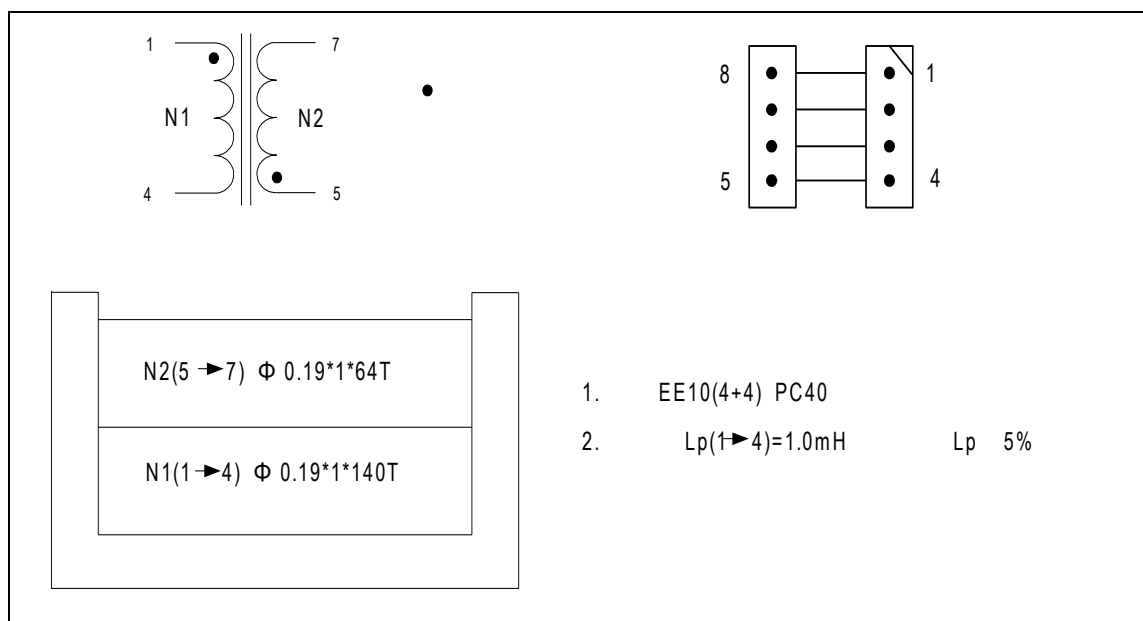
业务电话：400-033-6518

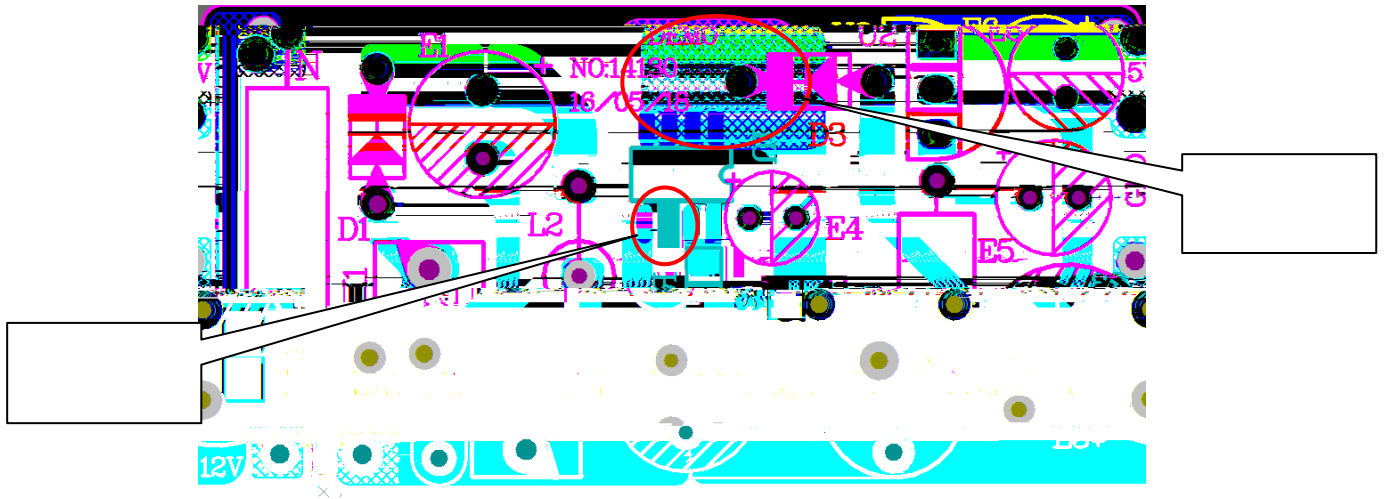
注：如需最新资料或技术支持，请与我们联系



BOM

D1~D4	IN4007	C2	1uF/50V	R1	22R
D5	UF4007	C3	470uF/25V	T1	EE10(4+4)
D6	ES2J	C4	100uF/25V	U1	SM7075P
D7	UF4007	C5	100uF/25V	U2	78L05
C1	10uF/400V	C6	104		



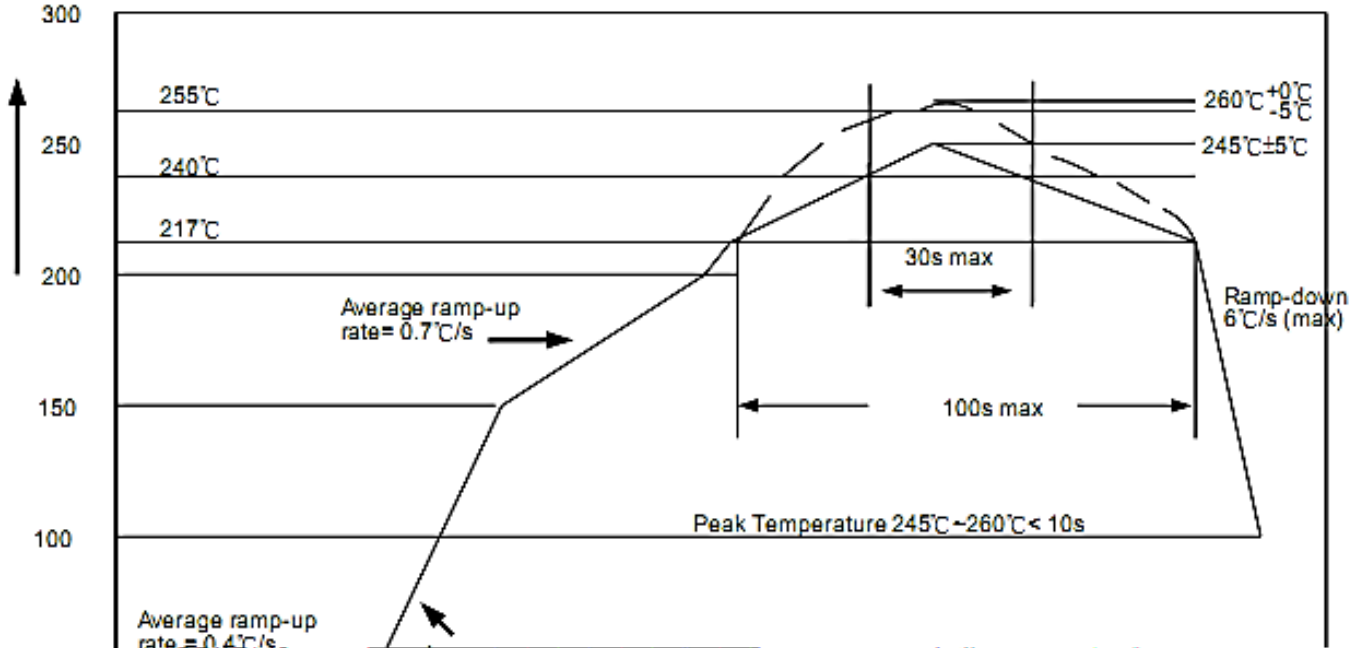


SOP8							EMC
	3						
	IC	5	6	7	8	GND	8*8mm

RoHs

J-STD-020

Temperature (°C)

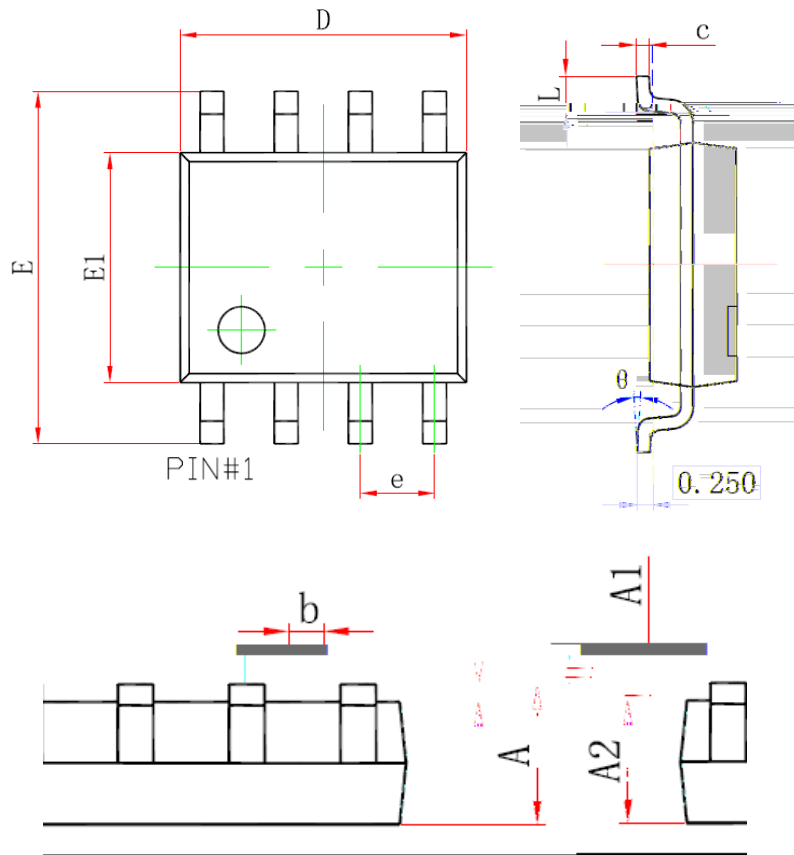


	mm ³ < 350	mm ³ 350~2000	mm ³ ≥ 2000
<1.6mm	260+0°C	260+0°C	260+0°C
1.6mm~2.5mm	260+0°C	250+0°C	245+0°C
≥2.5mm	250+0°C	245+0°C	245+0°C

业务电话：400-033-6518

注：如需最新资料或技术支持，请与我们联系

SOP8



Symbol	Min(mm)	Max(mm)
A	1.25	1.95
A1	-	0.25
A2	1.25	1.75
b	0.25	0.7
c	0.1	0.35
D	4.6	5.3
e	1.27(BSC)	
E	5.7	6.4
E1	3.7	4.2
L	0.2	1.5
θ	0°	10°

业务电话：400-033-6518

注：如需最新资料或技术支持，请与我们联系

